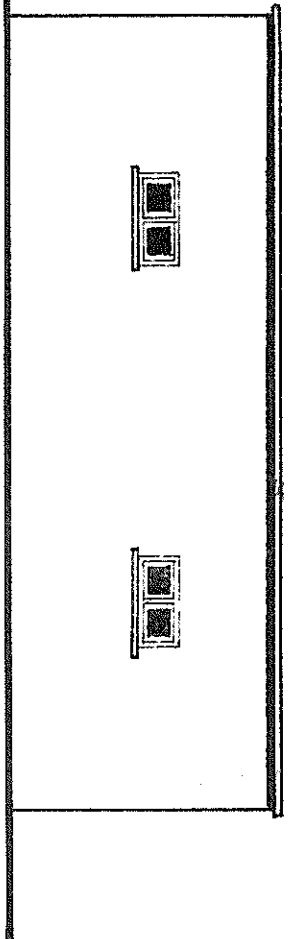
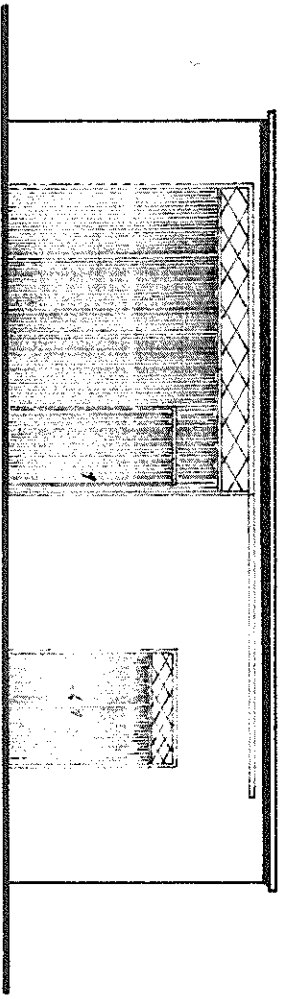


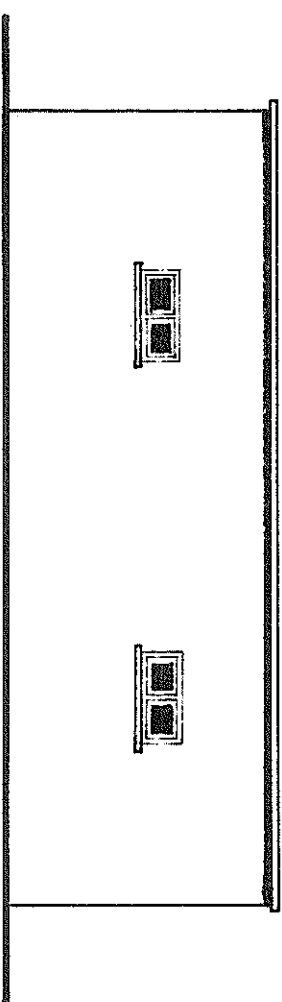
ALC. POSTERIOR



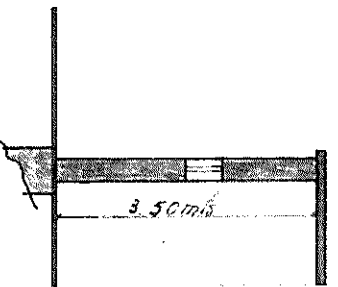
ALC. LAT. ESQUERDO



ALC. PRINCIPAL



ALC. LAT. DIREITO



3.50 m

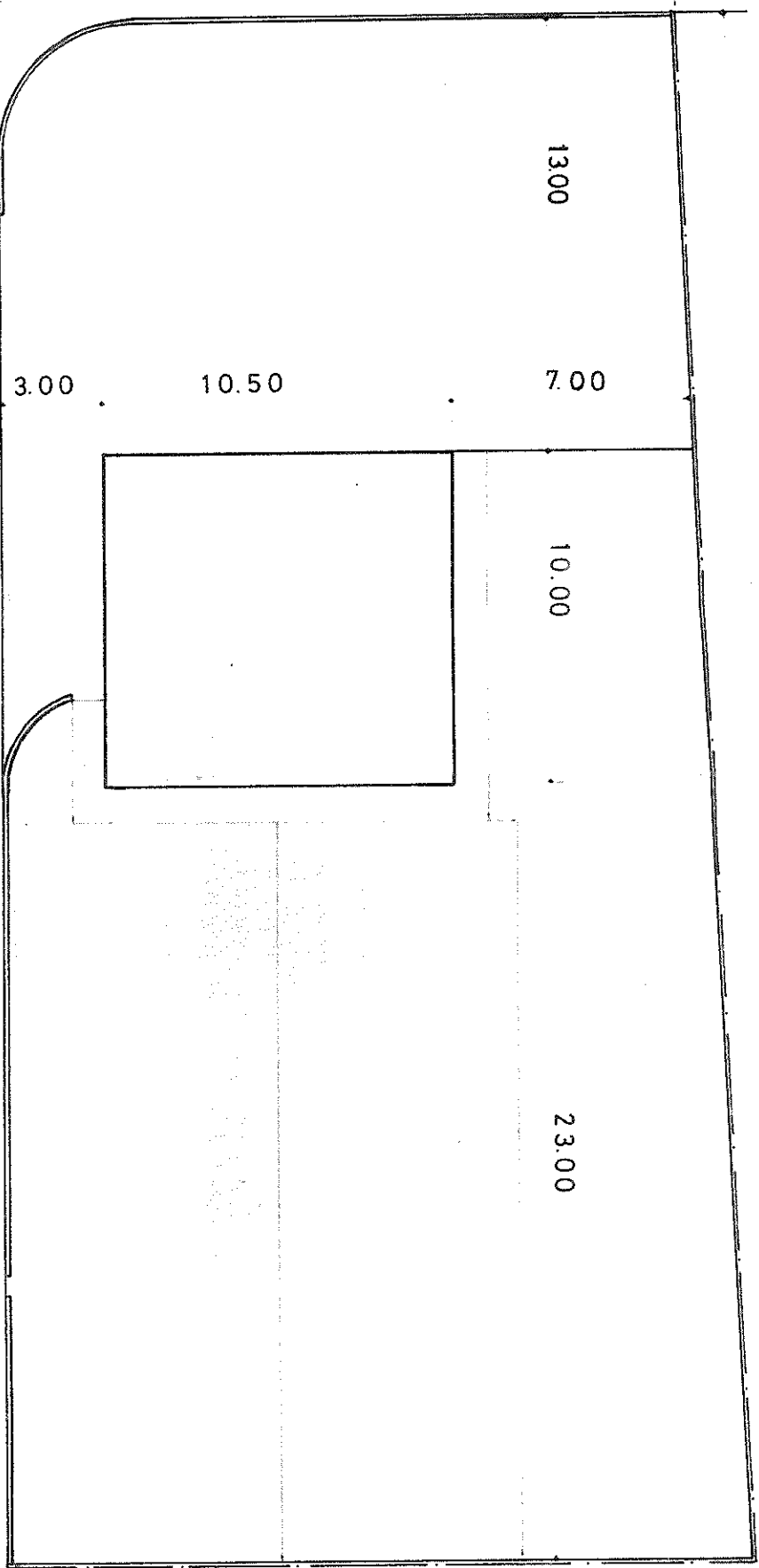
E.N. n.º 344

REQUE-  
RENTE

Serventia antiga

CENTRO

Caminho Público  
20.00



Albertina da Costa Almeida Pinto

46.00 mts.

CAMINHO PÚBLICO

PLANTILLA

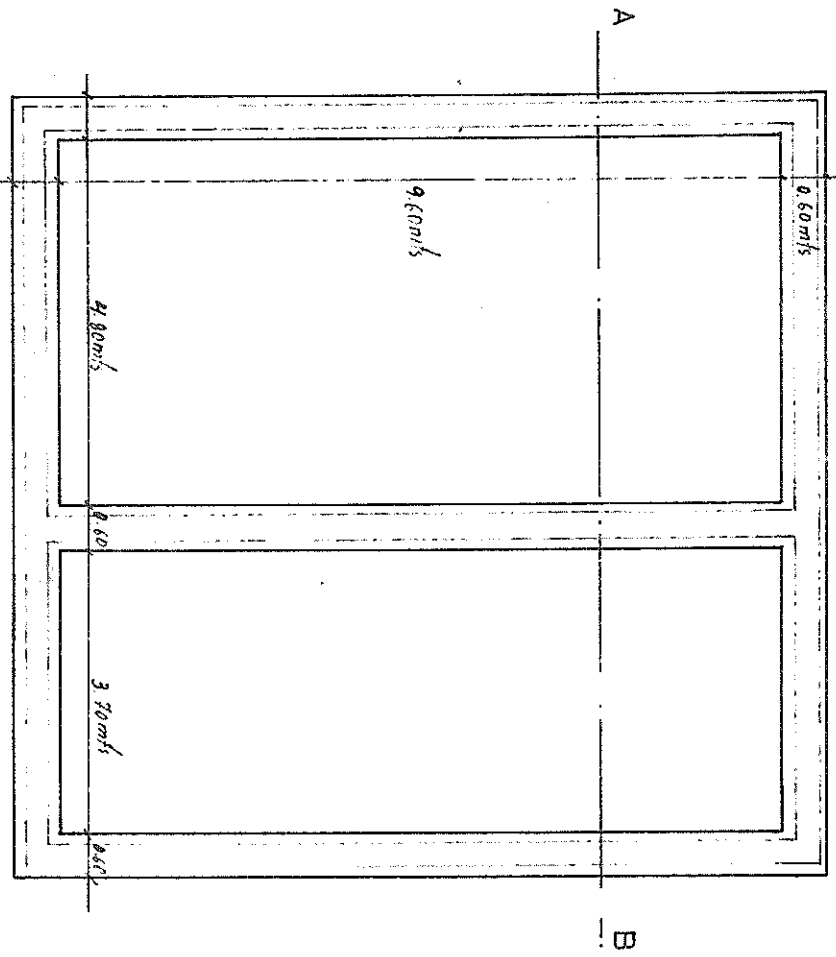
ESC:1/200

22.00  
Albano Lopes  
Nunes

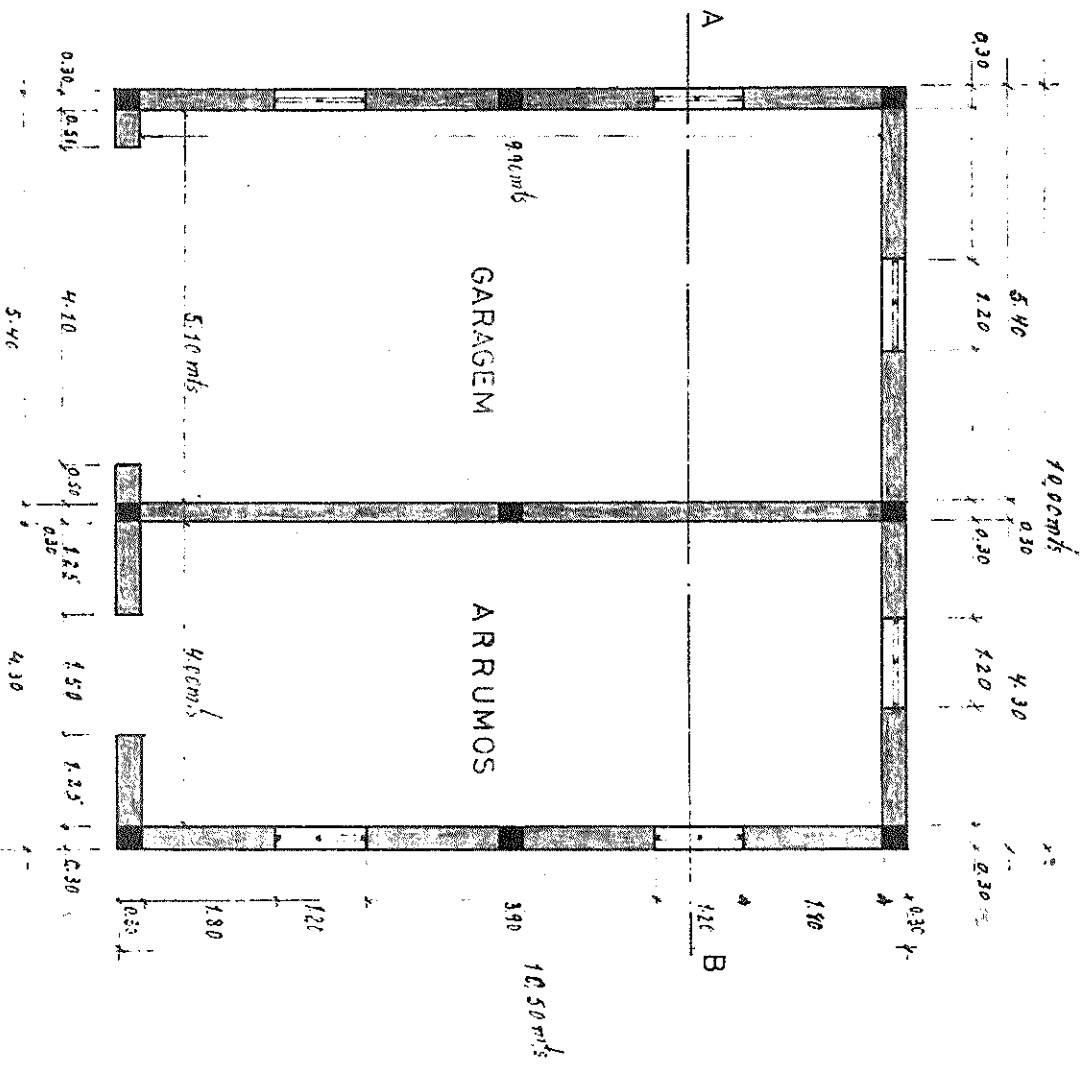
REQUERENTE:

AUGUSTO MARQUES  
MADEIRA

Portela da Cerdeira  
CERDEIRA - ARGANIL



P. FUNDAMENTOS



P. R / CHÃO